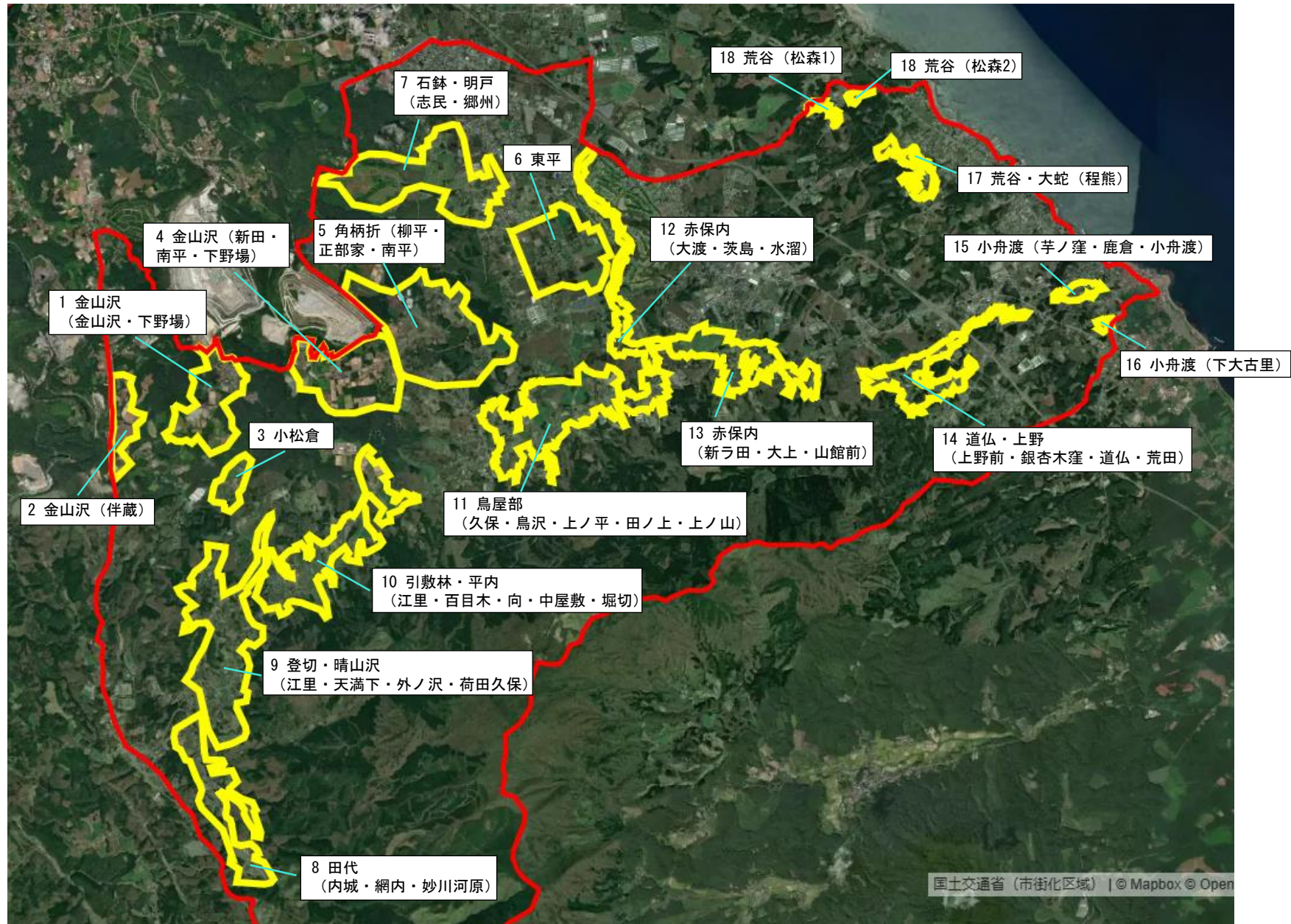
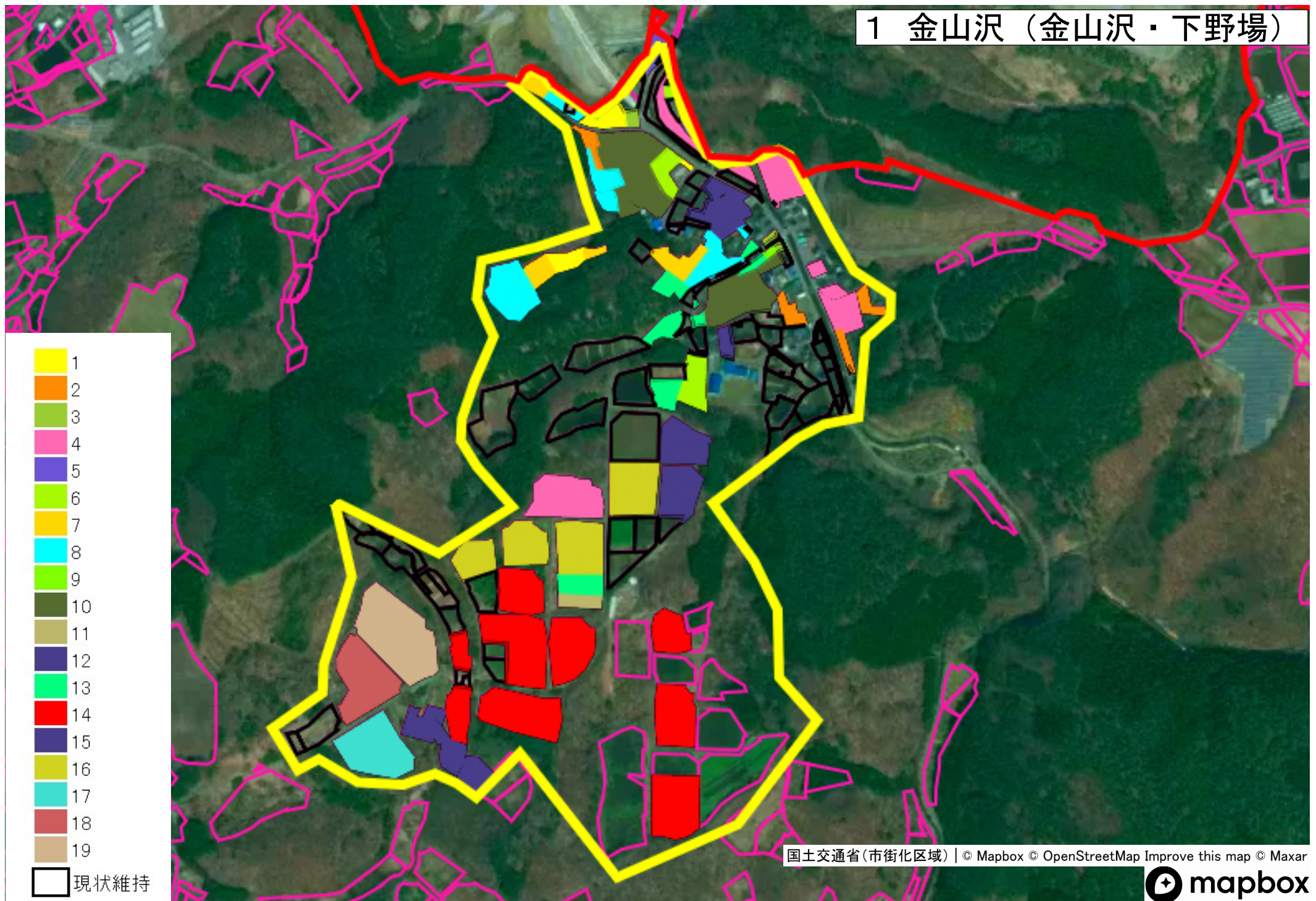


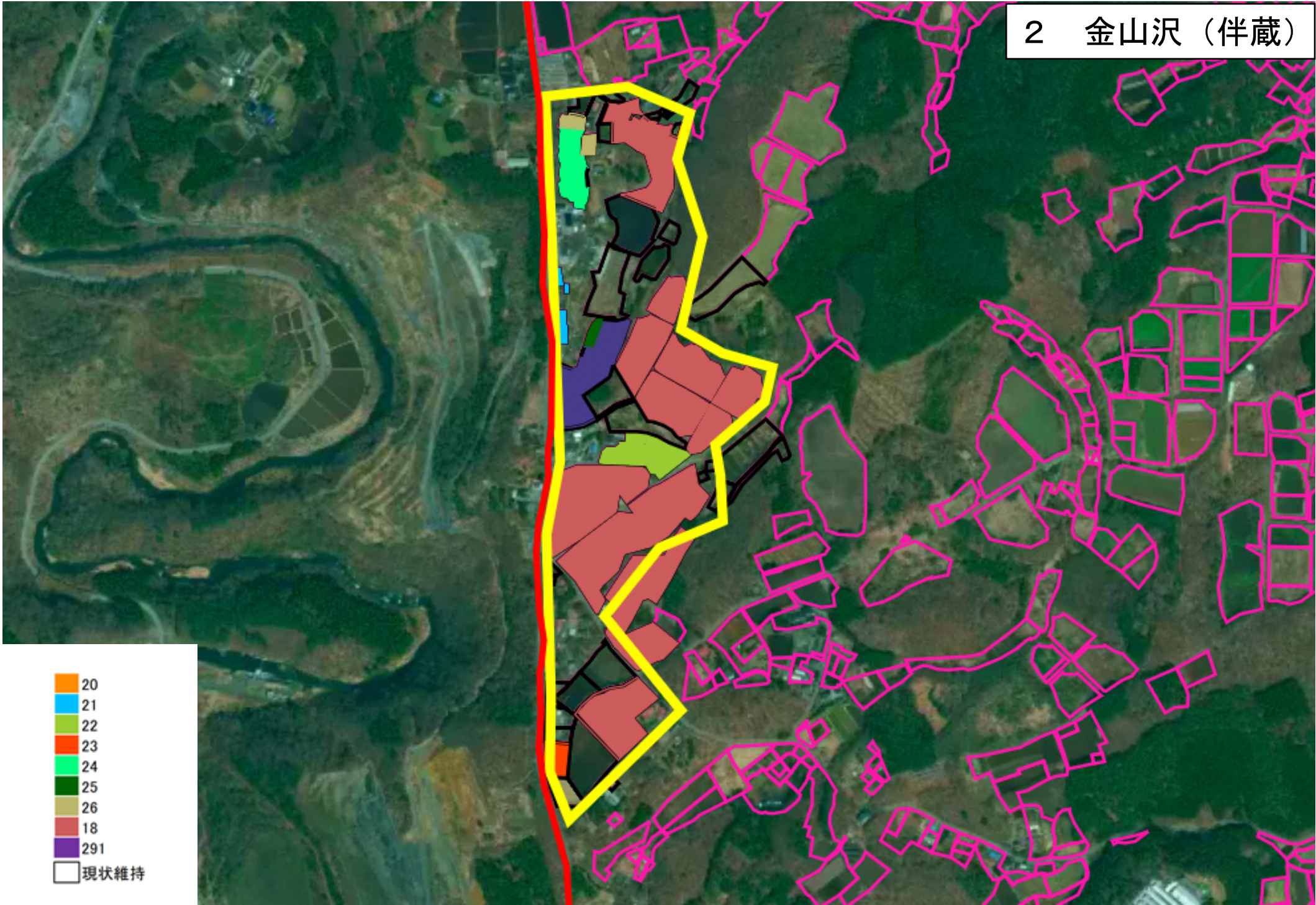
階上地区 全体地図 (目標地図位置)



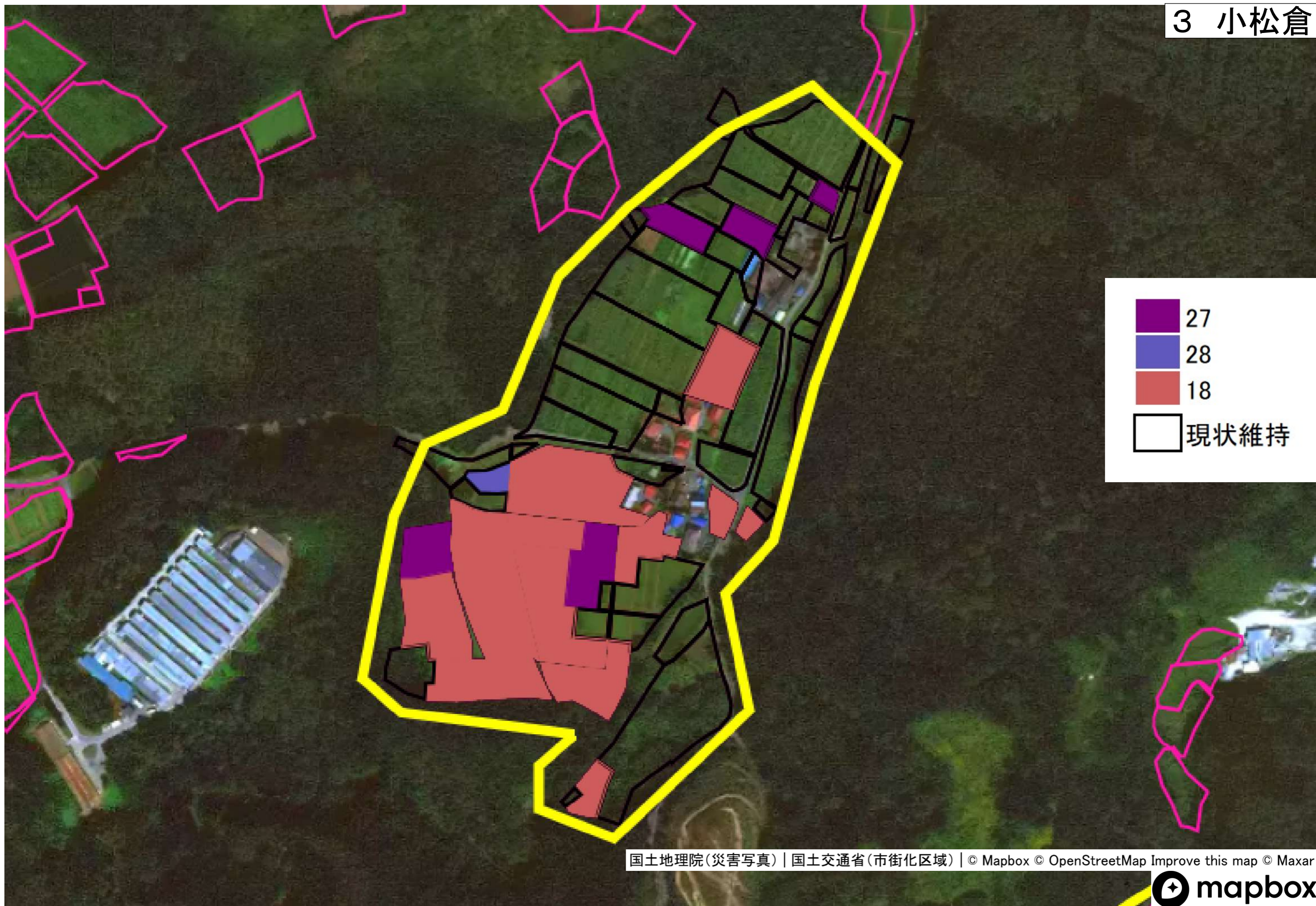
1 金山沢（金山沢・下野場）



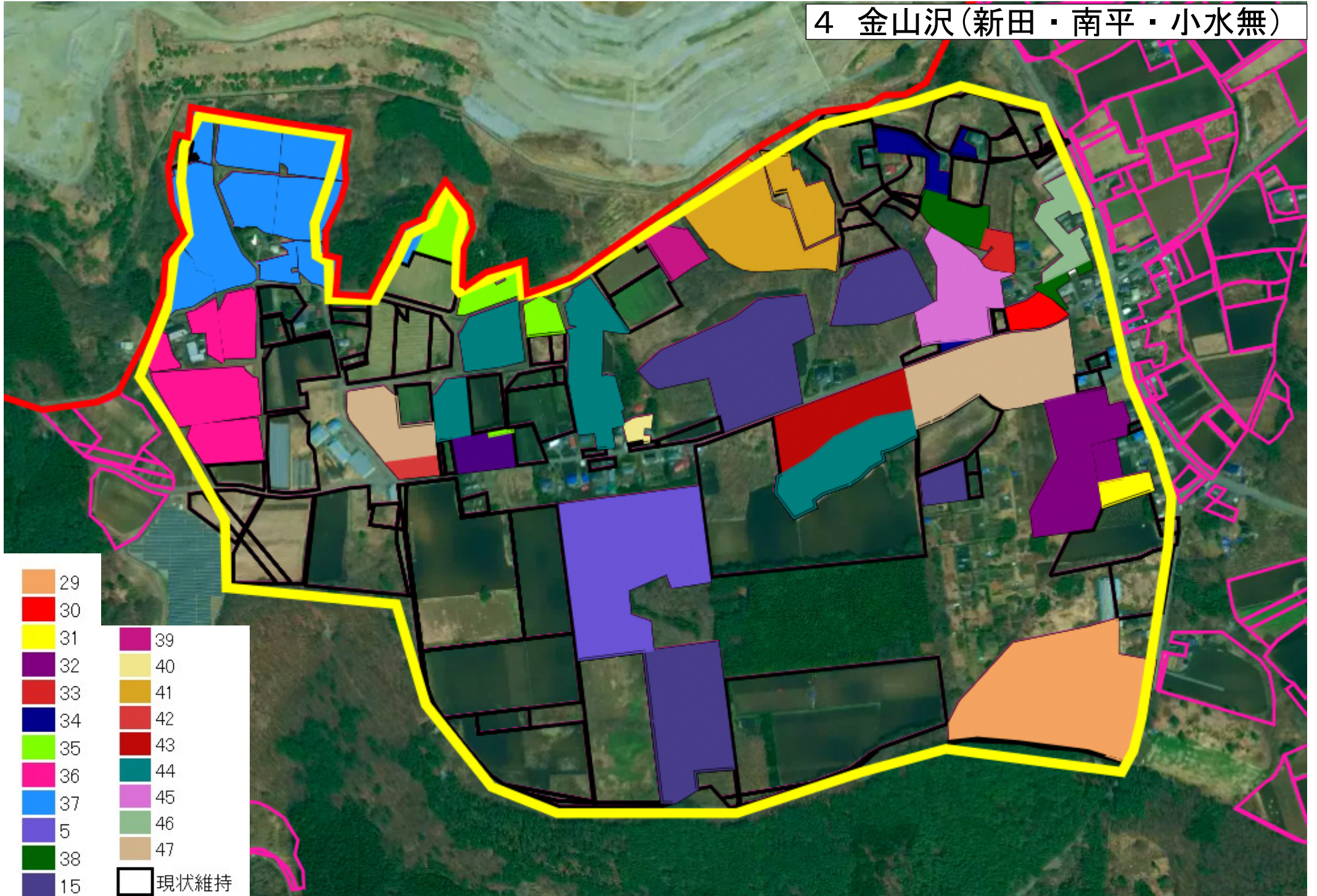
2 金山沢（伴蔵）



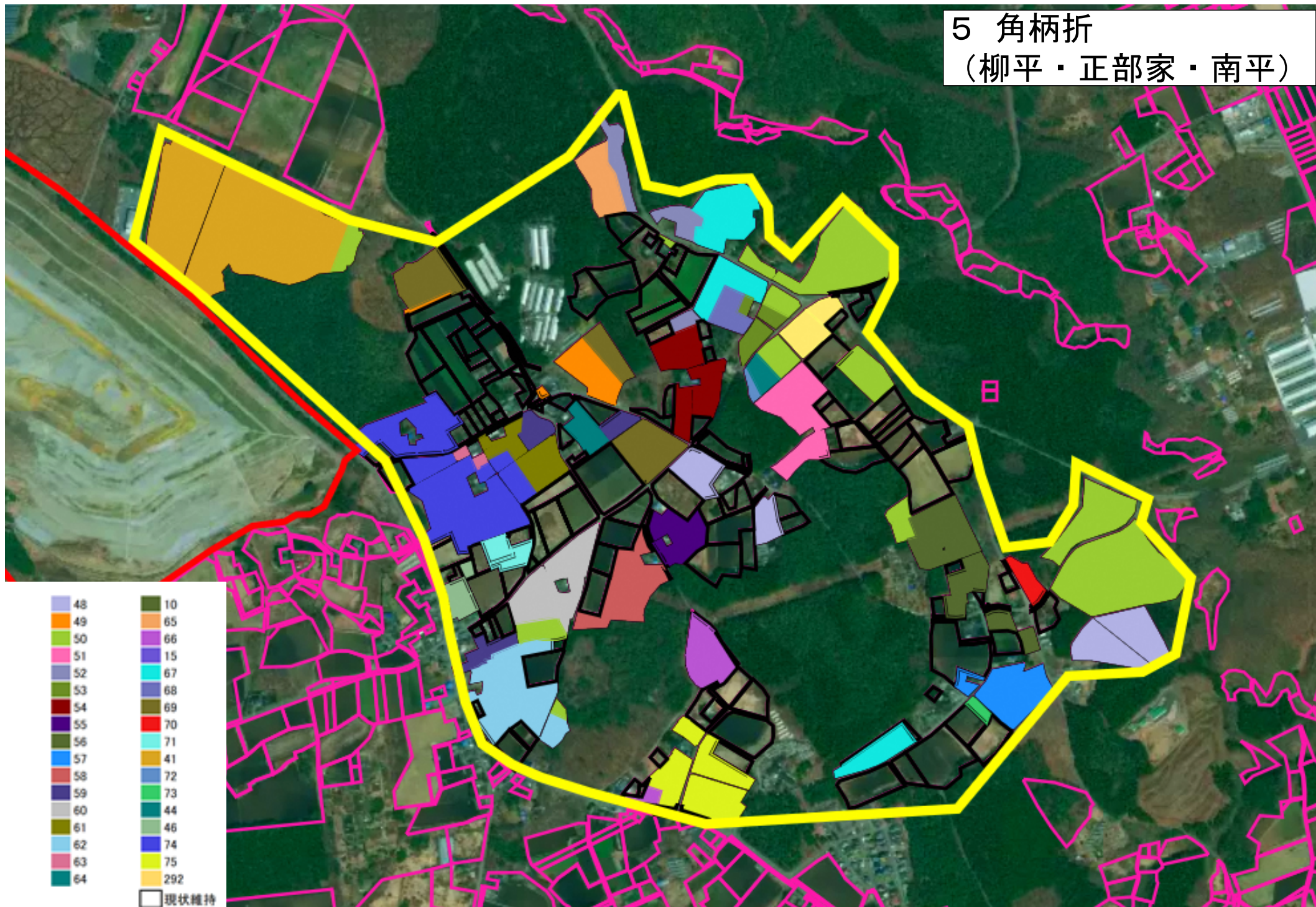
3 小松倉



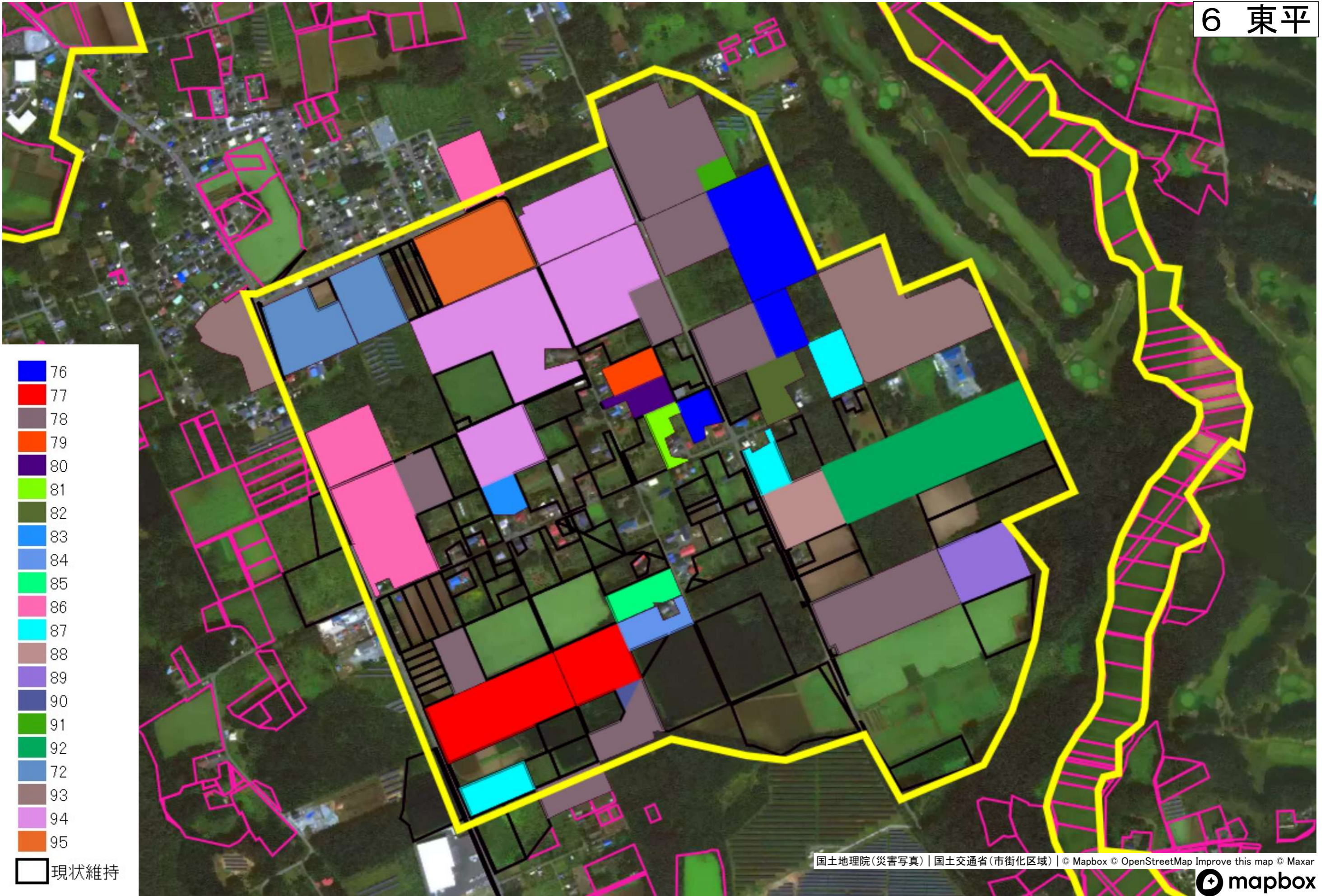
4 金山沢(新田・南平・小水無)



5 角柄折
(柳平・正部家・南平)

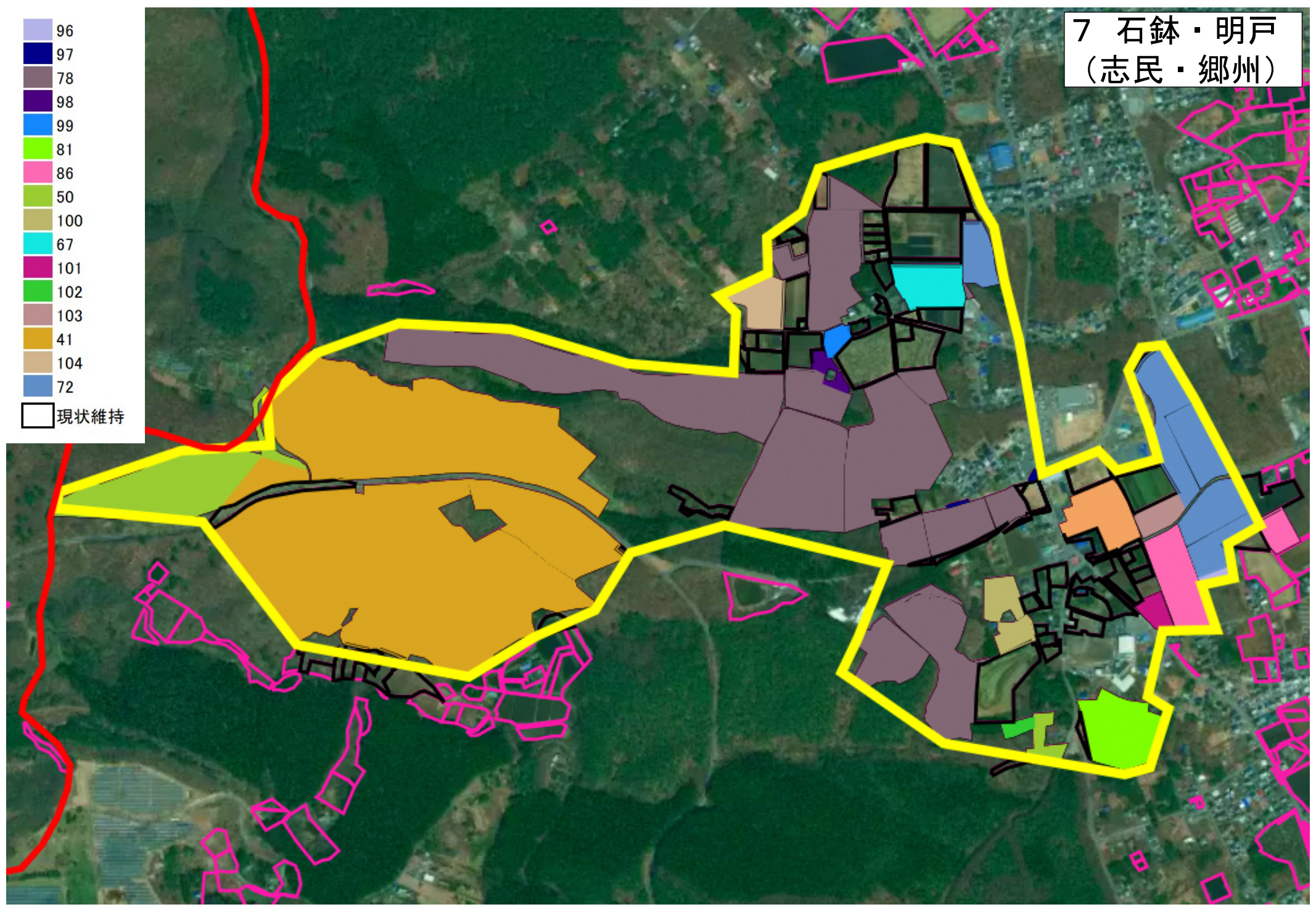


6 東平

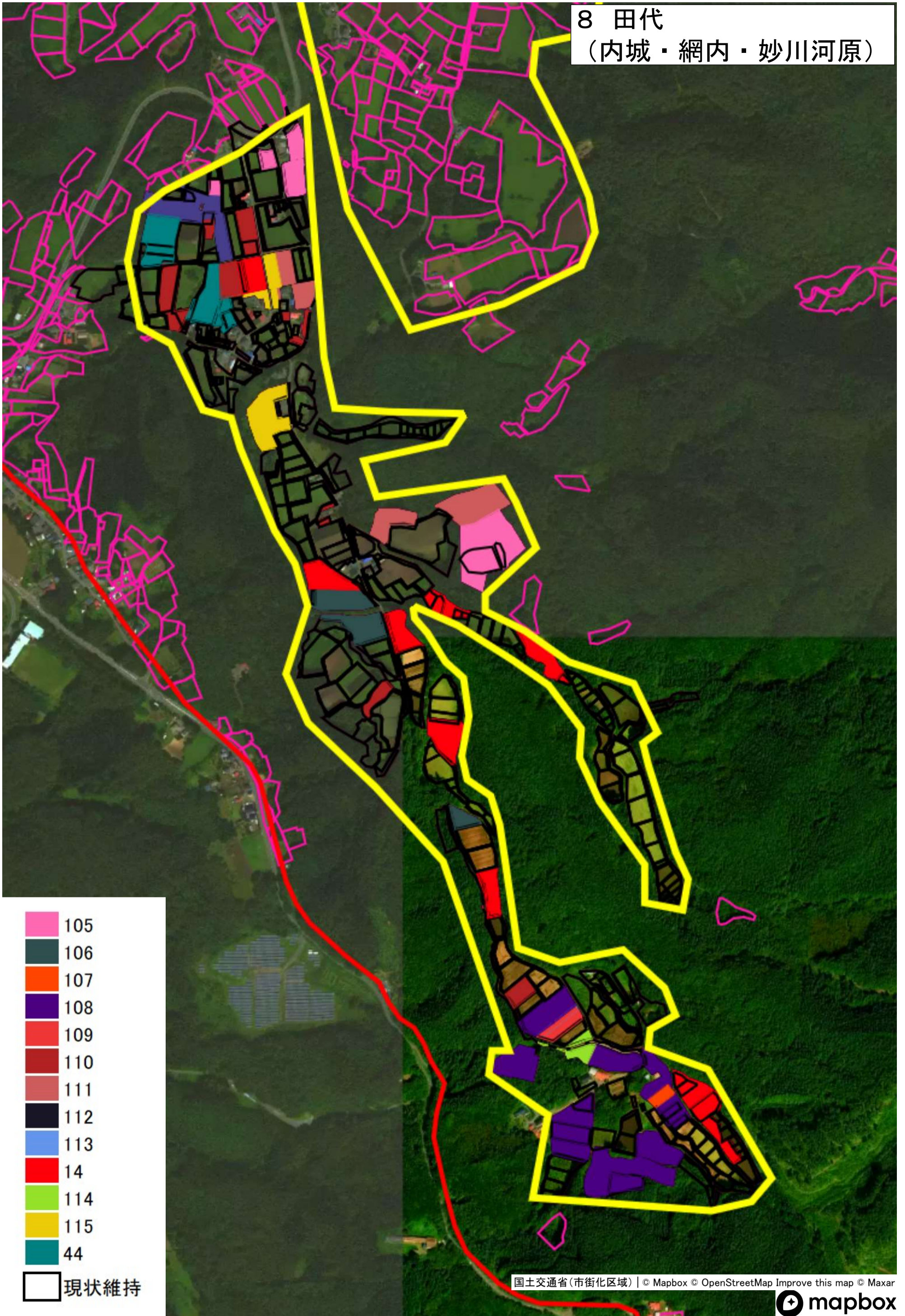


7 石鉢・明戸
(志民・郷州)

- 96
- 97
- 78
- 98
- 99
- 81
- 86
- 50
- 100
- 67
- 101
- 102
- 103
- 41
- 104
- 72
- 現状維持



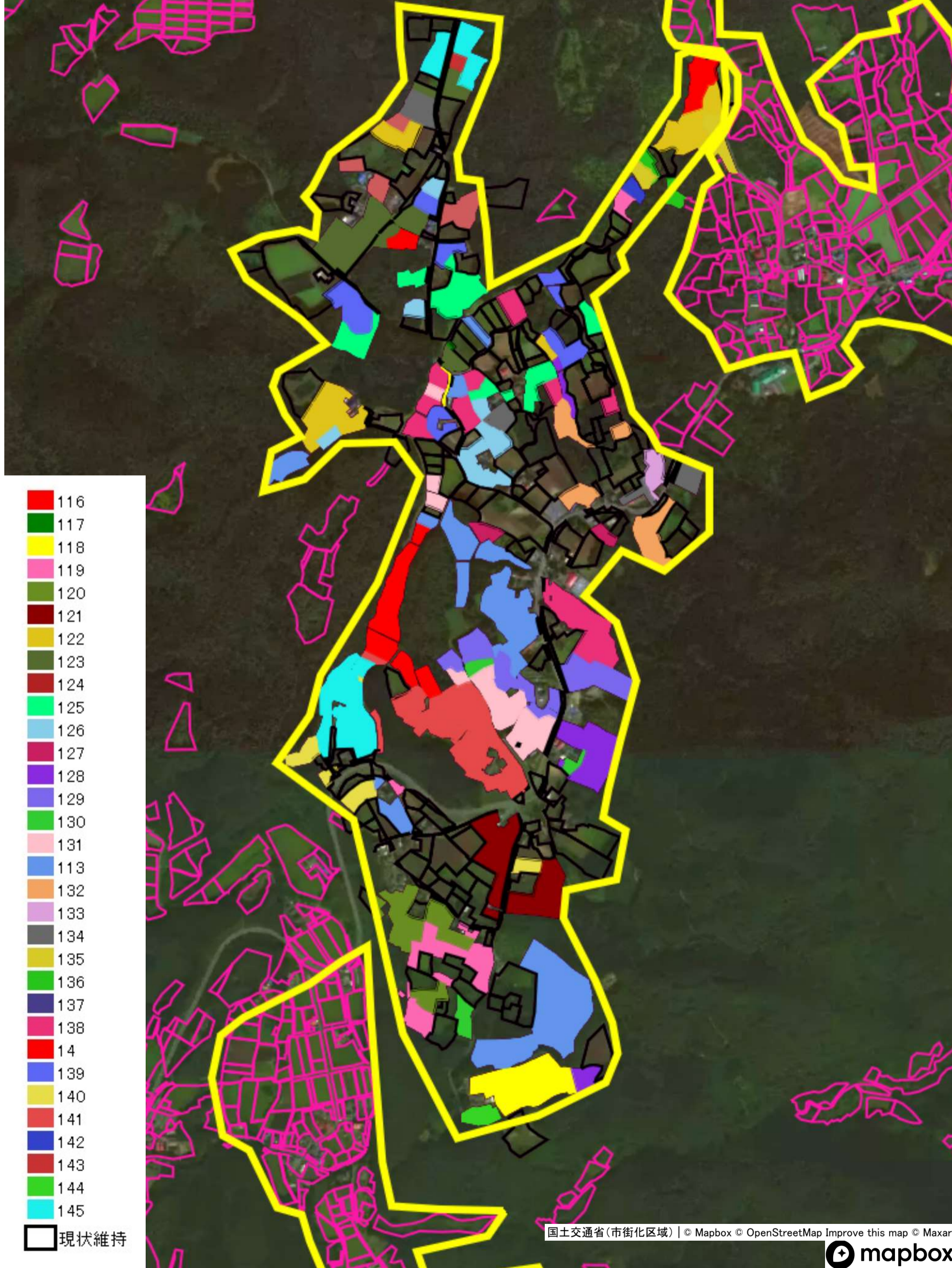
8 田代
(内城・網内・妙川河原)



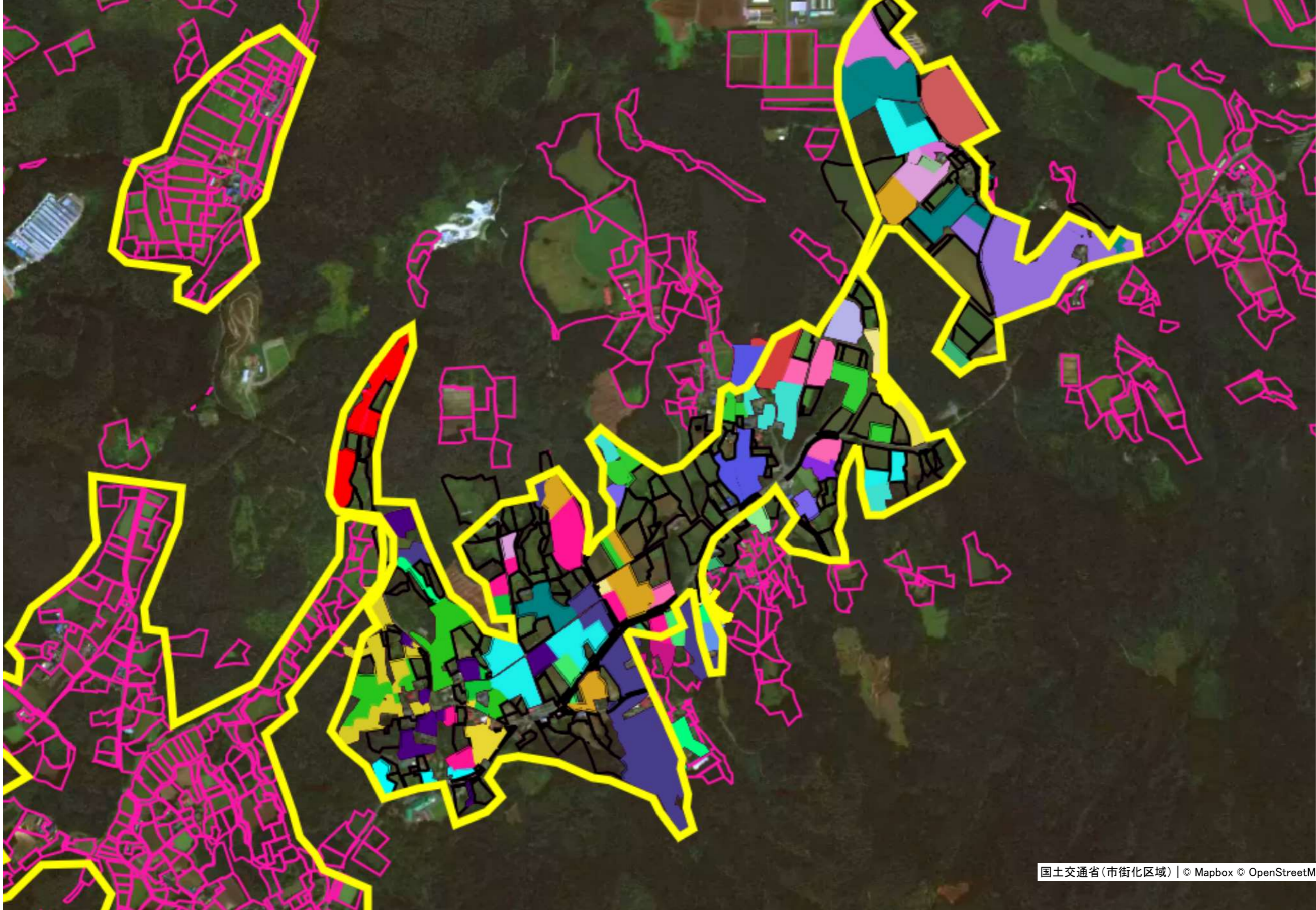
- 105
- 106
- 107
- 108
- 109
- 110
- 111
- 112
- 113
- 14
- 114
- 115
- 44

現状維持

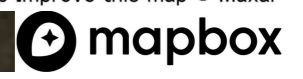
9 登切、晴山沢
 (江里、天満下、
 外ノ沢、荷田窪)



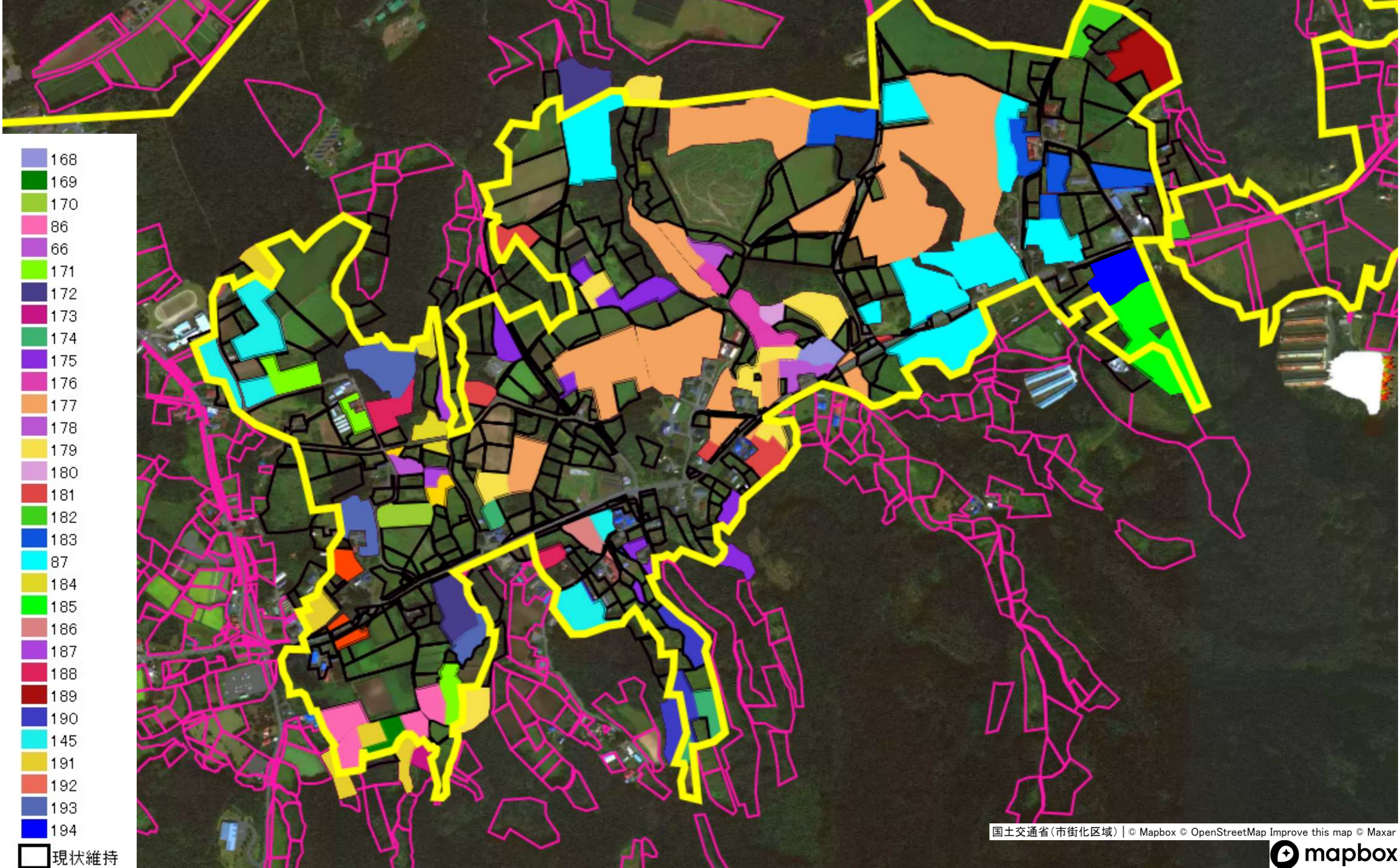
10 引敷林・平内
(江里、百目木、向、中屋敷、堀切)



- 146
- 96
- 147
- 148
- 86
- 111
- 133
- 135
- 136
- 149
- 137
- 150
- 151
- 152
- 153
- 154
- 155
- 156
- 157
- 158
- 159
- 160
- 161
- 162
- 163
- 164
- 165
- 14
- 166
- 140
- 41
- 167
- 44
- 145
- 現状維持



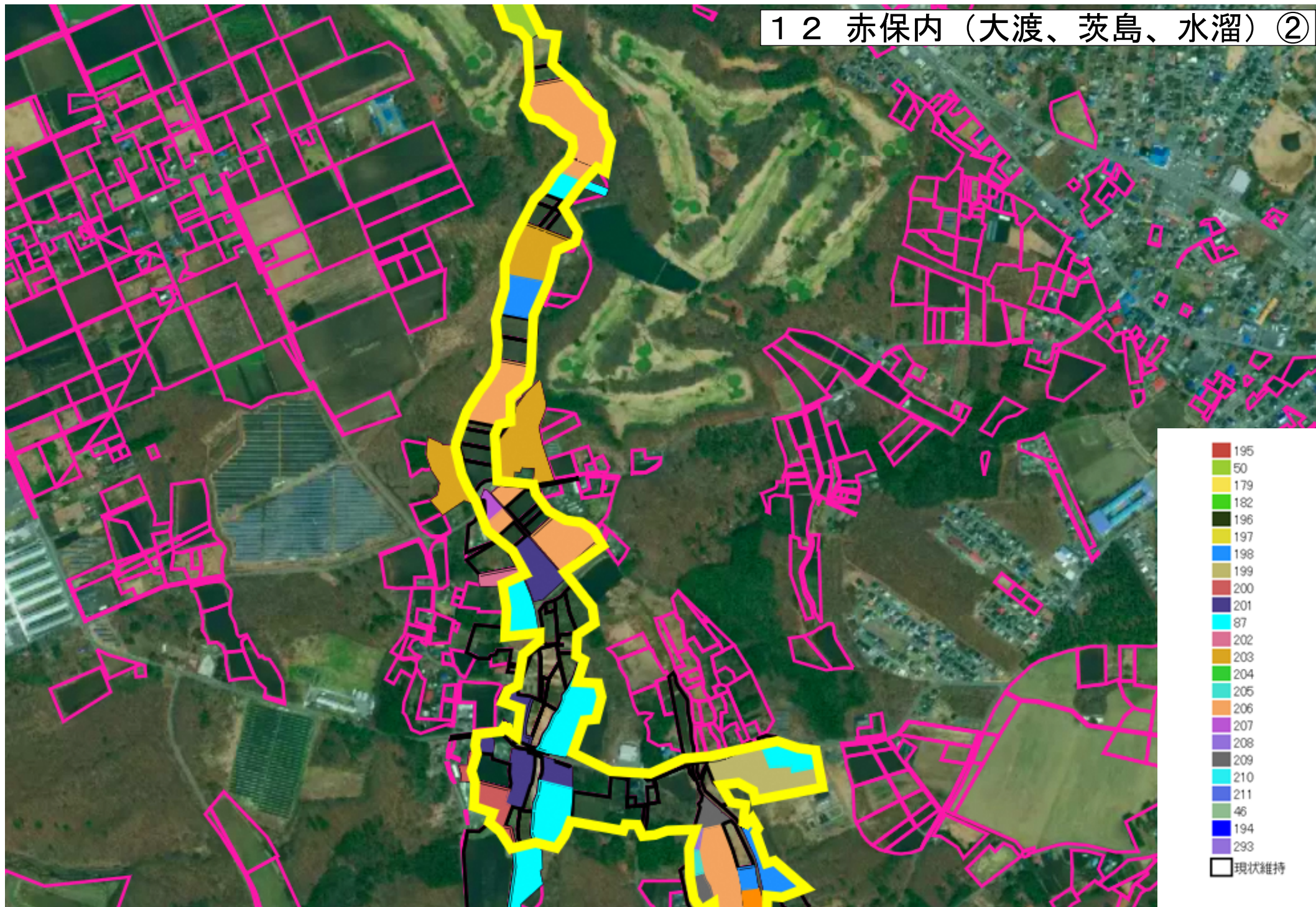
1 1 鳥屋部 (久保、鳥沢、上ノ平、下平、田ノ上、上ノ山)



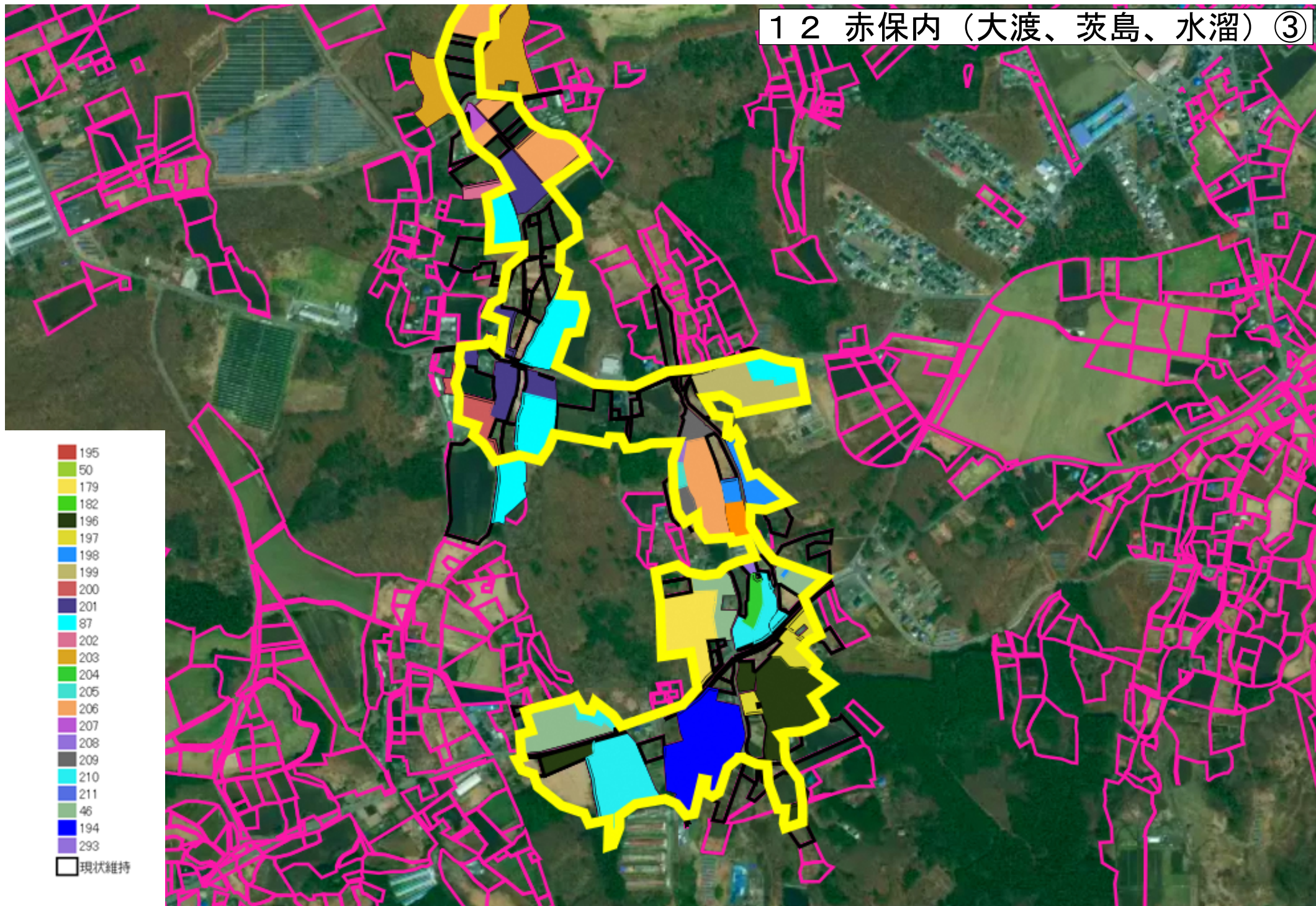
1 2 赤保内（大渡、茨島、水溜）①



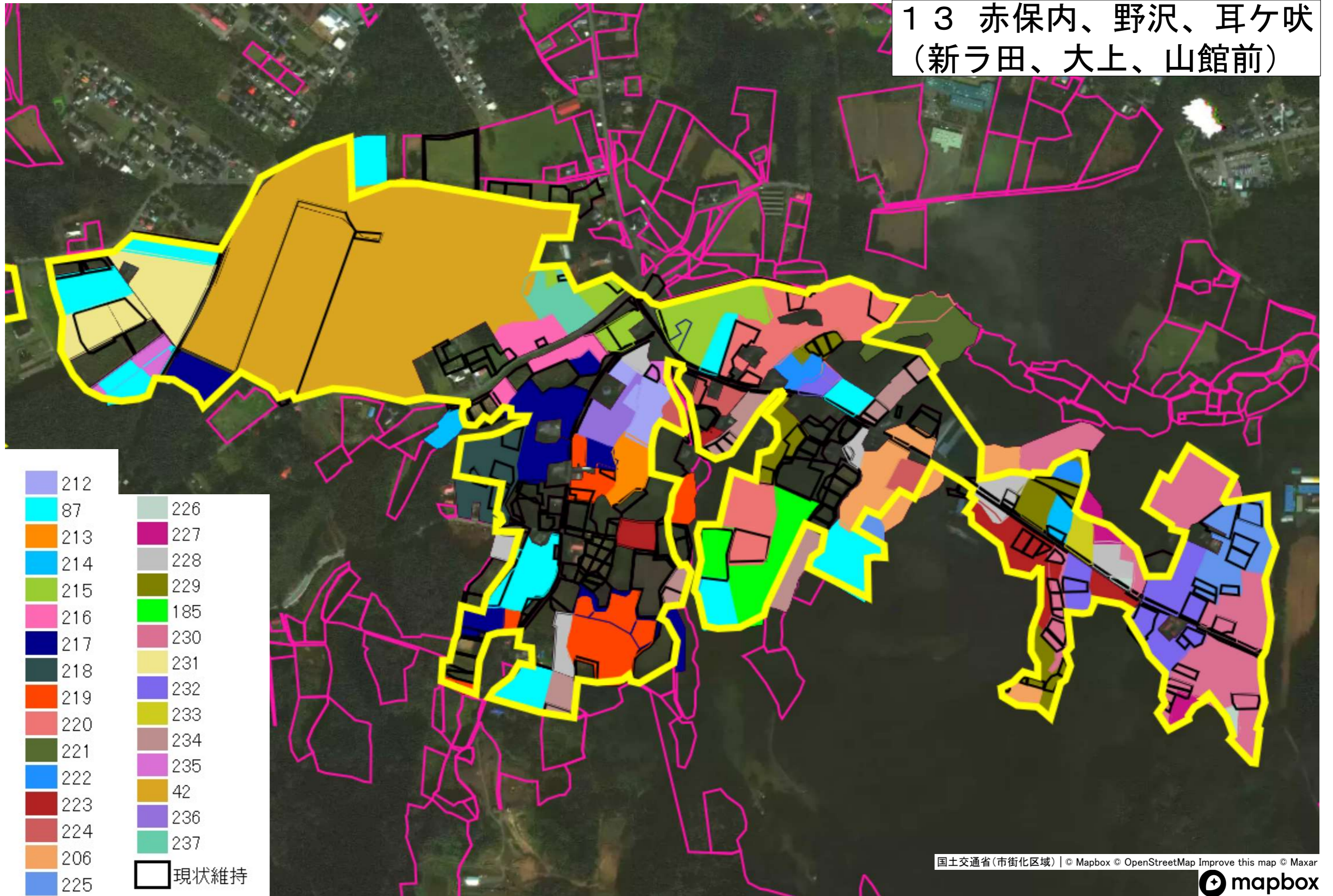
1 2 赤保内（大渡、茨島、水溜）②



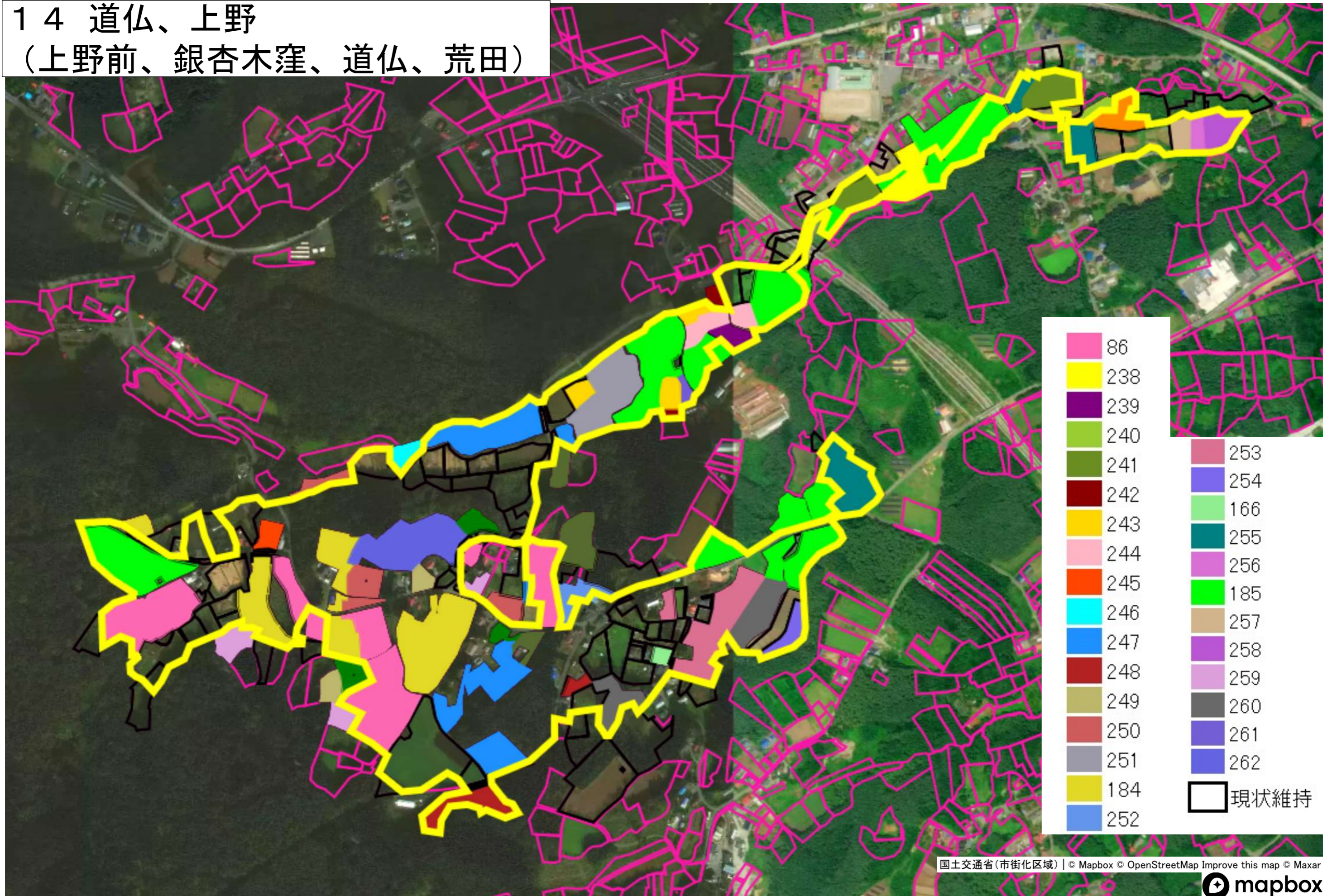
1 2 赤保内 (大渡、茨島、水溜) ③



1 3 赤保内、野沢、耳ヶ吠
(新う田、大上、山館前)

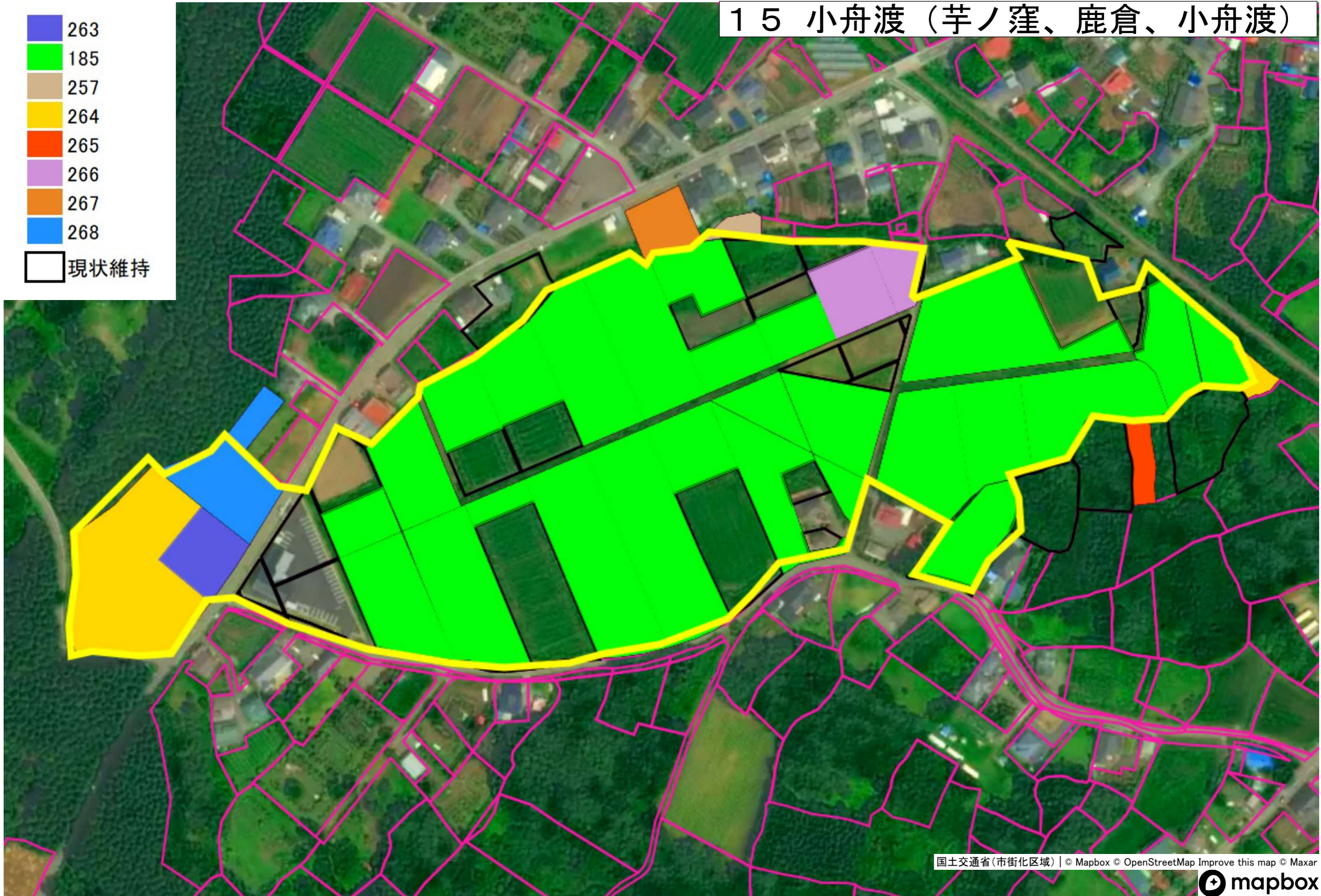


1 4 道仏、上野
(上野前、銀杏木窪、道仏、荒田)

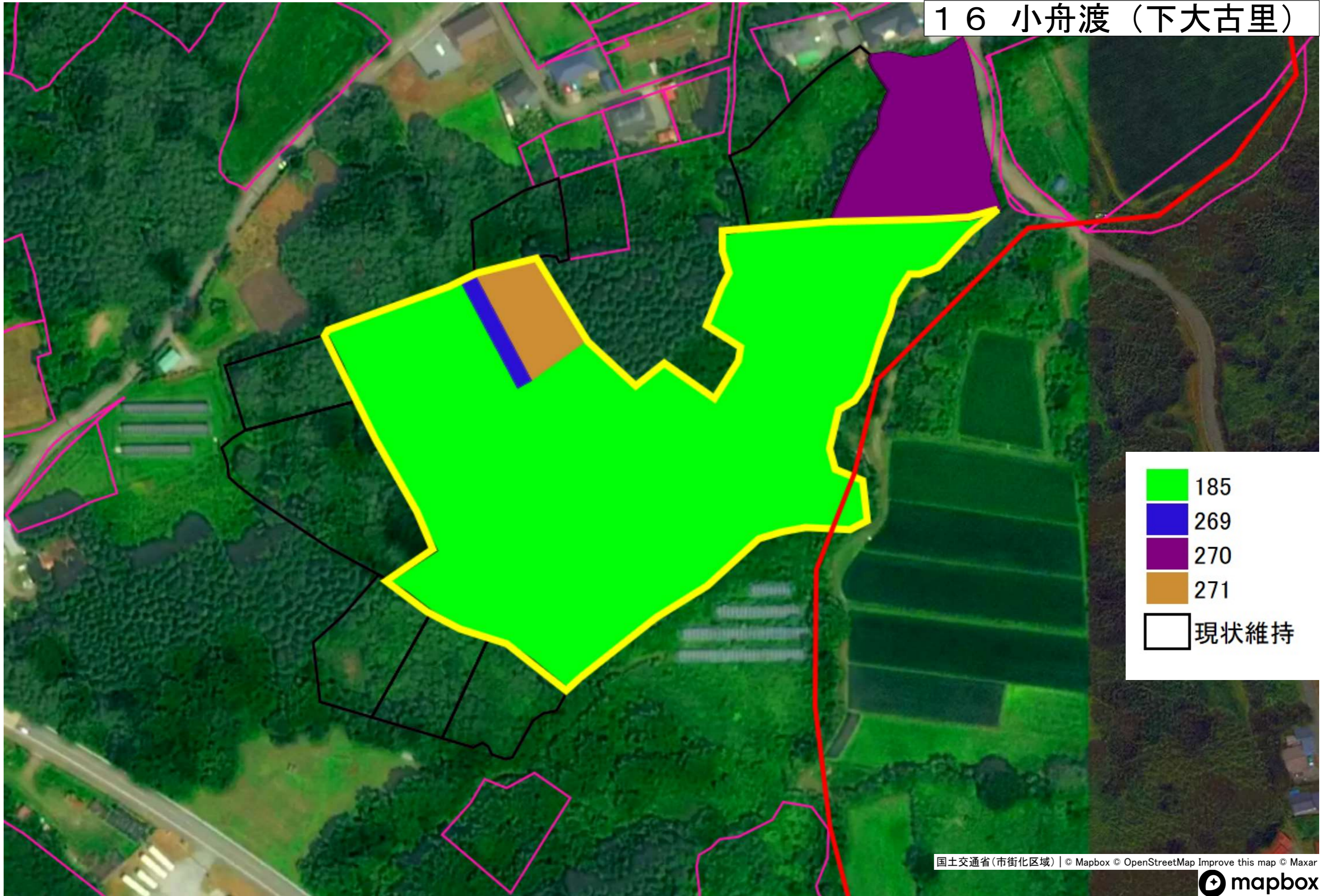


1 5 小舟渡（芋ノ窪、鹿倉、小舟渡）

- 263
- 185
- 257
- 264
- 265
- 266
- 267
- 268
- 現状維持

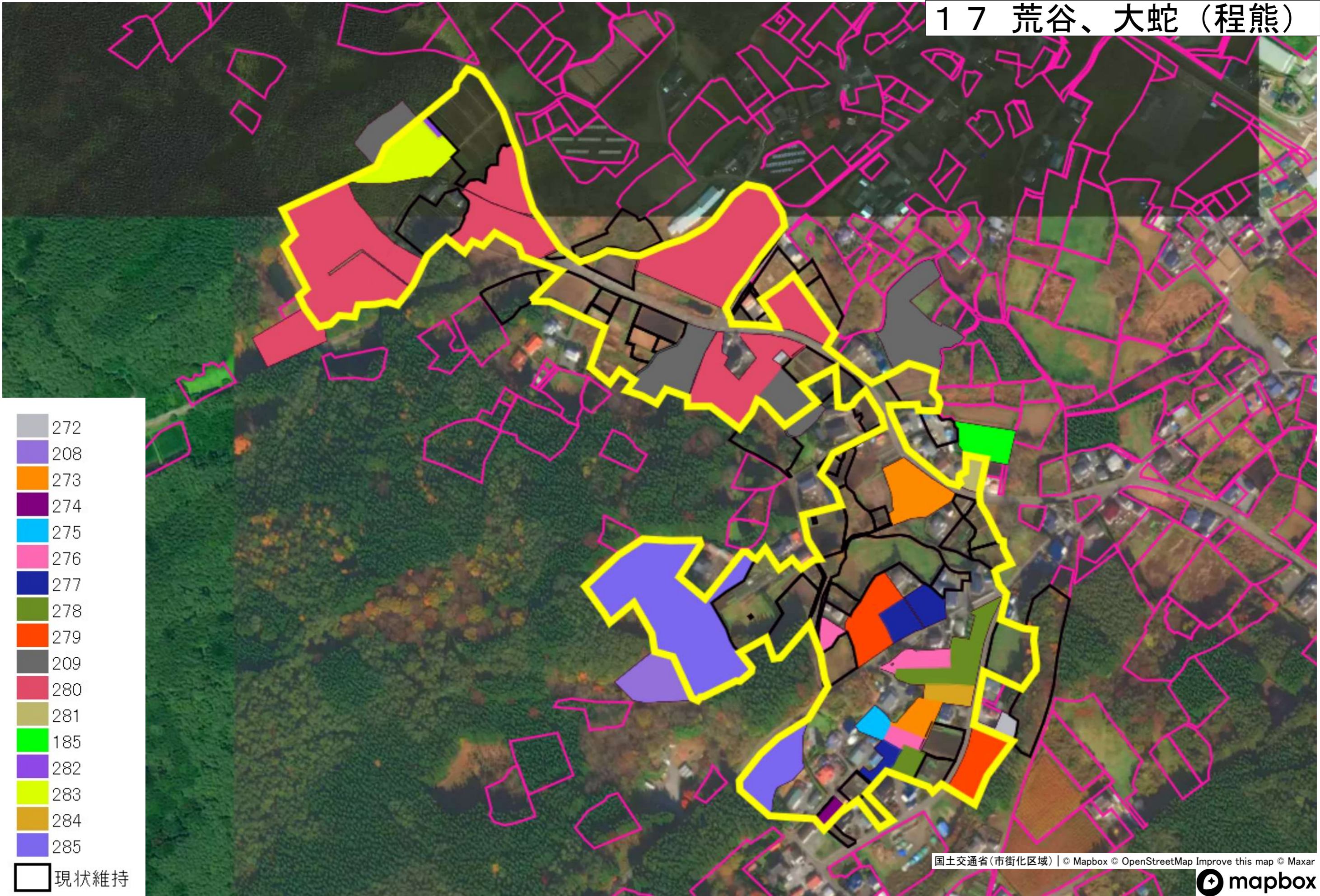


1 6 小舟渡（下大古里）

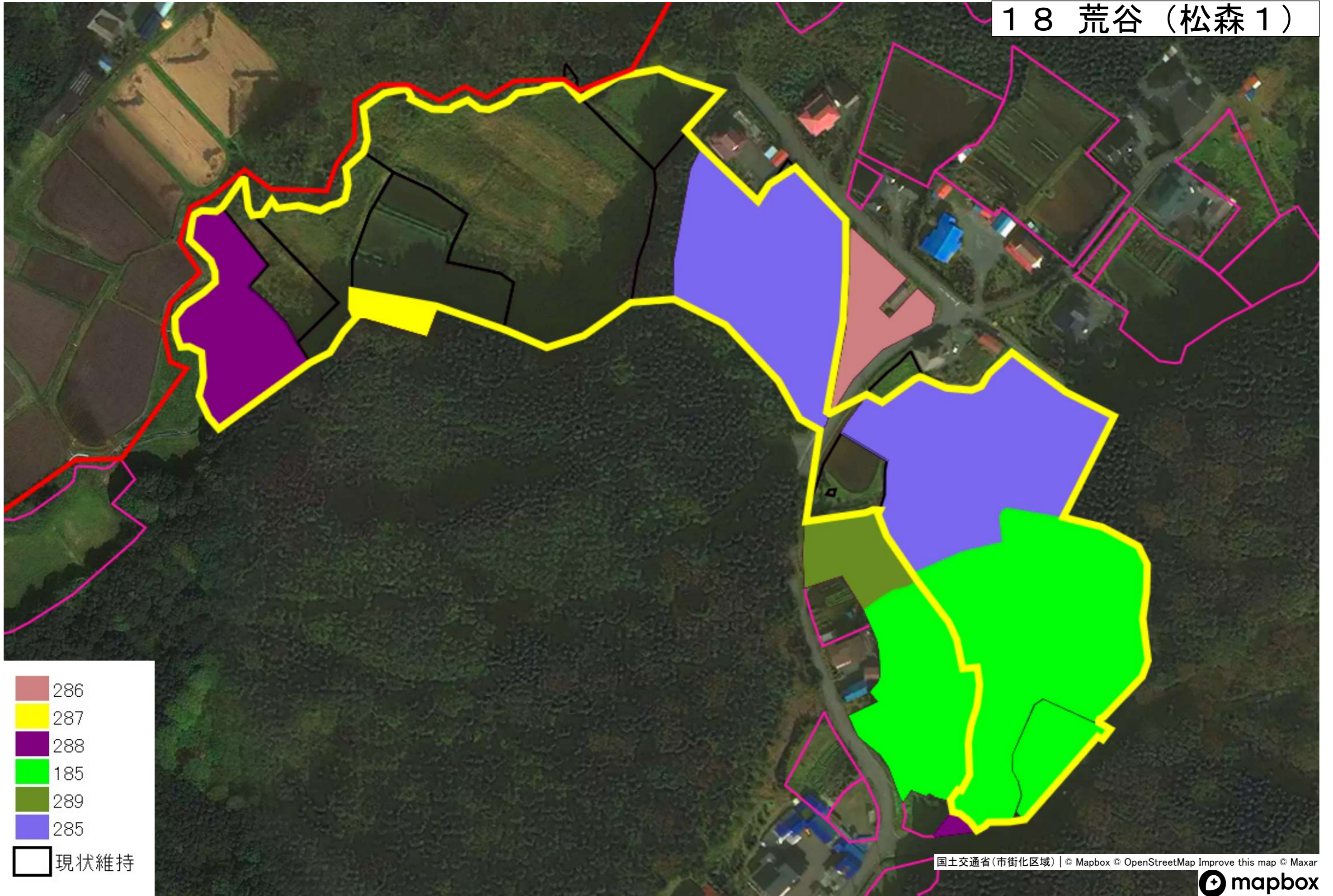


- 185
- 269
- 270
- 271
- 現状維持

17 荒谷、大蛇 (程熊)



1 8 荒谷 (松森 1)



19 荒谷 (松森2)

